



IST INTECH
UV LED CURING SPECIALISTS

TAILORED UV LED PINNING SYSTEMS

C SERIES

Pincure CX

HIGH POWERED
UV LED
PINNING



C-SERIES PINCURE CX WATER COOLED UV LED



POWER

10W/cm²



WINDOW

7mm



WAVELENGTH

405nm, 395nm,
385nm, 365nm



DIMENSIONS

[x]mm x 20mm
x 250mm



WEIGHT

1200g

- Constant output (non-pulse width modulated)
- Focussed
- Fully scalable in length
- Innovative optical design
- Variable Power
- Addressable as standard, offering width switching or zone selection
- Water cooled

The Pincure CX UV LED offers an ultra powerful solution in a compact and lightweight package for ultimate high speed pinning between inkjet printheads.

Designed for pinning of dense white inks.

Compact and lightweight design.



- Field replaceable modules offering extended service life
- Modular concept allows configuration to unlimited length
- Proven optics eliminates risk of UV light damage to the print head
- Available at wavelengths of 365nm, 385nm, 395nm, 405nm

 **STEADYCOOL**

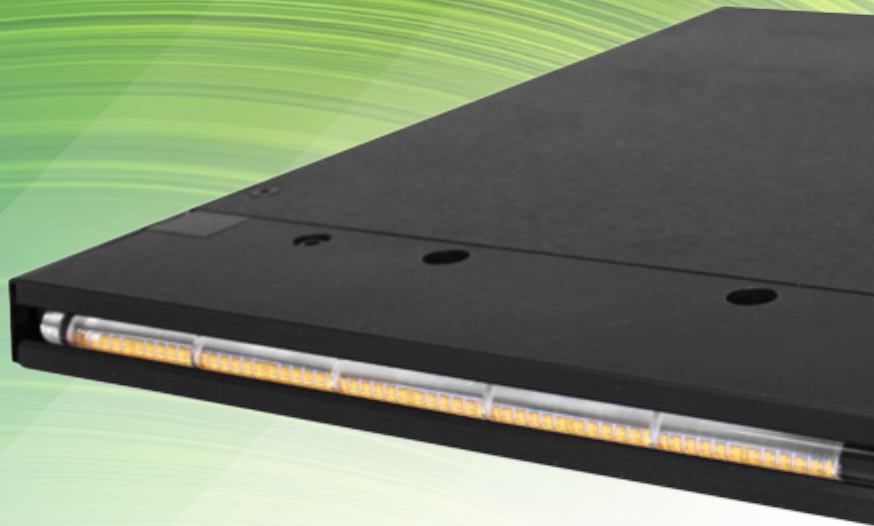
WATER COOLING

 **XT8 LED**

UV BOOSTER

For more information visit:
istintech.com/intech-product

**EXPERIENCE
THE DIFFERENCE
UV LED
EXPERTS**



IST INTECH
UV LED CURING SPECIALISTS



CONTACT US TODAY FOR MORE INFORMATION



+44 (0) 1869 233611



mail@istintech.com



www.istintech.com

2 x M4 FIXINGS THRU
C'BORED BOTH SIDES/
FOR MOUNTING